

Customer :

customer

Customer part :

customer part

Comment :

Comment

S1=4.42

S2=4.28

Tmax=461

Tp S2=500.0

PI=0.51

HI=98

Sample =1708.30

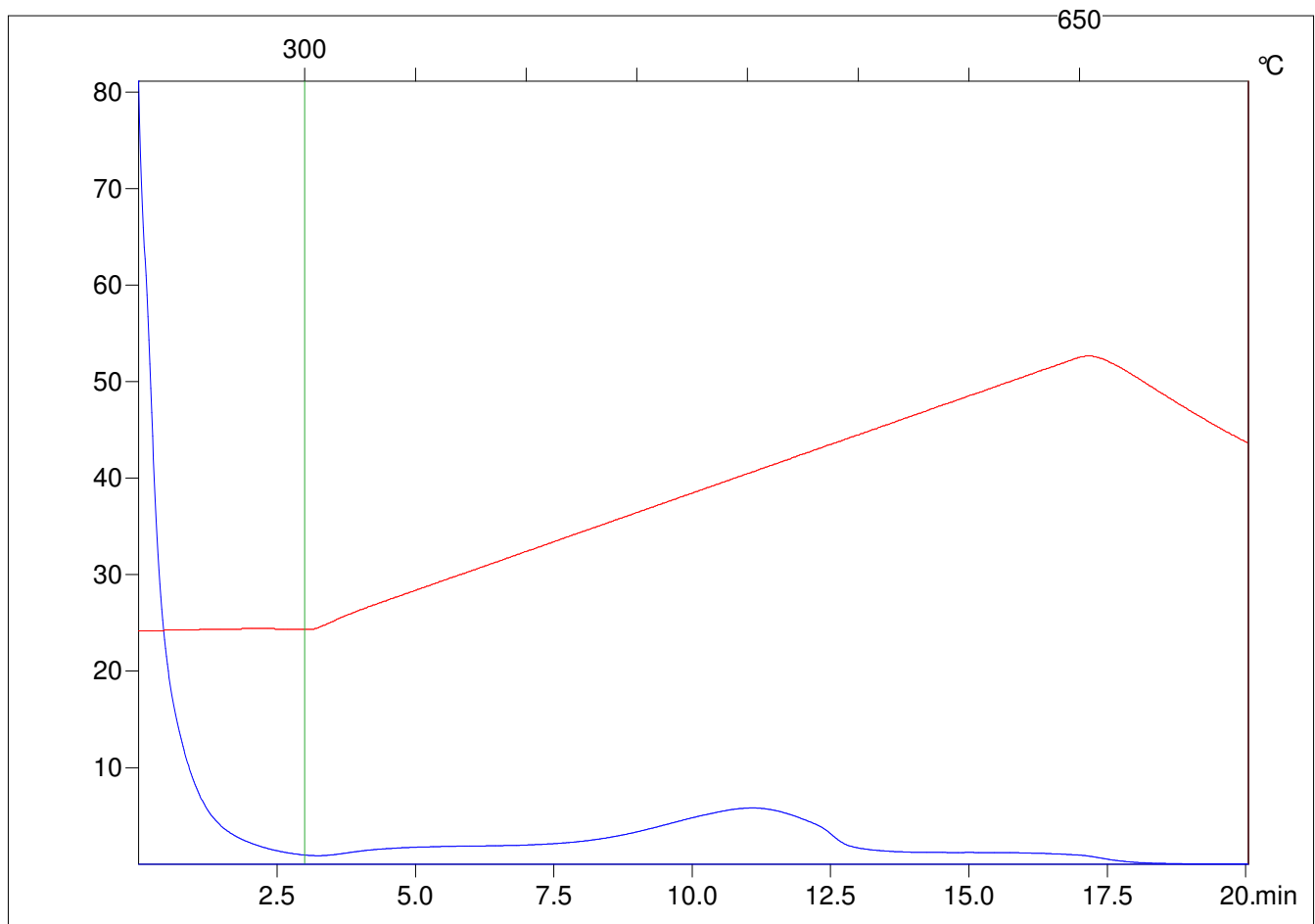
Method =Bulk Rock

Cycle=Basic

KFID(10*9)=1444

Qty =70.3

TOC=4.35



C:\VINC\PK1_1792\PK098.R00 : FID pyrolysis graphic

State

Pyro Status

Oxi Status